

---

**THE RITZ-CARLTON DECKHOUSE**

Ritz-Carlton Drive, West Bay / North West Point, Cayman Islands

---

**PROPERTY DETAILS**

Price: US\$12,950,000	MLS#: 417697	Type: Residential
Listing Type: Single Family Home	Status: Current	Bedrooms: 5
Bathrooms: 4.5	Built: 2022	Acreage: 0.47
Sq. Ft.: 7,500		

---

**PROPERTY DESCRIPTION**

This Spectacular Ritz-Carlton, DeckHouse Villa boasts sweeping views of The Ritz-Carlton Golf Club as well as calming canal views and features two levels of dramatic indoor and outdoor living space. Newly constructed in 2022, this 7500 sq. ft. 5 bed 4.5 bath Single Family home includes a very generous 2 vehicle garage and private driveway. The front of the Villa with the wood beams, paying homage to the original Deckhouse design, creates warmth and style with a generous front garden that is both inviting and private. Enjoy the best of 5\* Resort living at the multi award winning Ritz-Carlton Resort with the exclusivity of a private gated community of only 19 homes at the DeckHouses. This Home has Influences from Mid-Century modern design and the beautiful Art deco hotels of Miami. The very generous open plan family living spaces ensure that this Villa will command premium vacation rental income through the managed on-site rental program. The living space features a spacious chef's kitchen, butler's pantry, wine cellar, private office, and separate ground floor bedroom/den space, with full ensuite bathroom which allows for flexible family & guest living. An inviting outdoor amenity deck equipped with a gourmet BBQ area, and ample dining space, you will find this home a great place to host a private chef dinner/party. A private designer pool & generous outdoor play area is yours to share with family or guests, a large, covered patio with motorized privacy screens and a separate classic boat house completes the indoor-outdoor resort living in this private Villa at the Ritz-Carlton Resort. The first floor is accessed by a dramatic staircase that leads onto a large open plan family TV /entertainment room. There are 3 further generous family guest rooms with ensuite bathrooms and walk in custom closets as well as a dedicated laundry room on this level, in addition your own expansive primary suite - with his and hers closets stretching across the entire back of the... [View More](#)

---

**PROPERTY FEATURES**

Views	Canal Front, Golf View
Block	12C
Parcel	451/3H10H16
Foundation	Slab
Zoning	Beach Resort/Residential
Sea Frontage	100

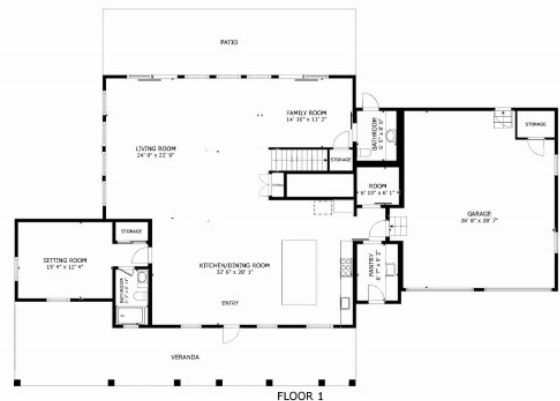
---

**PRESENTED BY****Sophie Miles**

+1-345-926-9926

sophie@milestone.ky

IMAGES



GROSS INTERNAL AREA  
 FLOOR 1: 1,984 sq.ft. FLOOR 2: 2,472 sq.ft.  
 EXCLUDED AREAS : GARAGE 400 sq.ft. VERANDA 506 sq.ft. BALCONY 711 sq.ft. BRILCONY 37 sq.ft.  
 TOTAL : 7,660 sq.ft.  
©2015 CIREBA CONSULTING, INC. ALL RIGHTS RESERVED. ALL FIGURES APPROX.





FLOOR 2

GROSS INTERNAL AREA:  
 FLOOR 1: 3,086 sq. ft. | FLOOR 2: 2,417 sq. ft.  
 ENCLOSED AREAS: GARAGE 589 sq. ft. | VESTIBULE 589 sq. ft. | BALCONY 211 sq. ft. | POOL DECK 57 sq. ft.  
 TOTAL: 7,282 sq. ft.

NOTE: AREA COVERED OVER AND APPROXIMATE, ACTUAL MAY VARY.

