
ALEXANDER GROVE SUBDIVISION - CAYMAN BRAC - POND LOT 4

Sister Islands, Cayman Islands

PROPERTY DETAILS

Price: CI\$100,230	MLS#: 415336	Type: Land
Listing Type: Low Density Residential	Status: Current	Width: 124.70
Depth: 247.40	Acres: 0.40	

PROPERTY DESCRIPTION

PRICE INCREASE IMMINENT! These parcels are expected to see an increase in pricing soon. All offers are encouraged to be placed before the 15th of August 2024 to benefit from the current pricing. Alexander Grove is Cayman Brac's newest proposed sub-division. The developers aim to create a beautiful community that owners will be proud to be a part of. As you enter the neighbourhood, you'll be met with sweeping, hand-crafted double-stone walls entranceway to welcome you home. This property is one of only four waterfront parcels. Each enjoys, not only views of the pond but also an extended view of the sea a few hundred feet away. The development is close to some of the best amenities the island has to offer. Bragging some of the island's best culinary experiences the Brac; from staple and traditional local cuisines, from local restaurants to fine dining, live music, and good company from The Alexander Hotel; your evenings are sure to be fun-filled. You are also within walking distance of the only stretch of beach on the island! Perfect for a quiet intimate stroll along a peaceful beach, with only the sound of the water rolling onto the reef to keep you and yours, company. You may be lucky enough to experience the occasional bio-luminescence light show as the waves lap along the shoreline! As you make your way to the beach, pick up your favourite beverage at the local fine wine and spirit stores, as you walk by. Are you Caymanian and a first-time buyer? - Perfect opportunity to take advantage of Stamp Duty Wavier Program offered by Government for first-time buyers. This is an excellent investment choice that is sure to increase in value due to its location. Get on the property ladder now! Investors looking for a place to build the perfect vacation home on a small quaint island? - With the above, you're in an excellent location for vacation rentals when you're not there. (Developers are in the planning stages of neighbourhood covenants.)

PROPERTY FEATURES

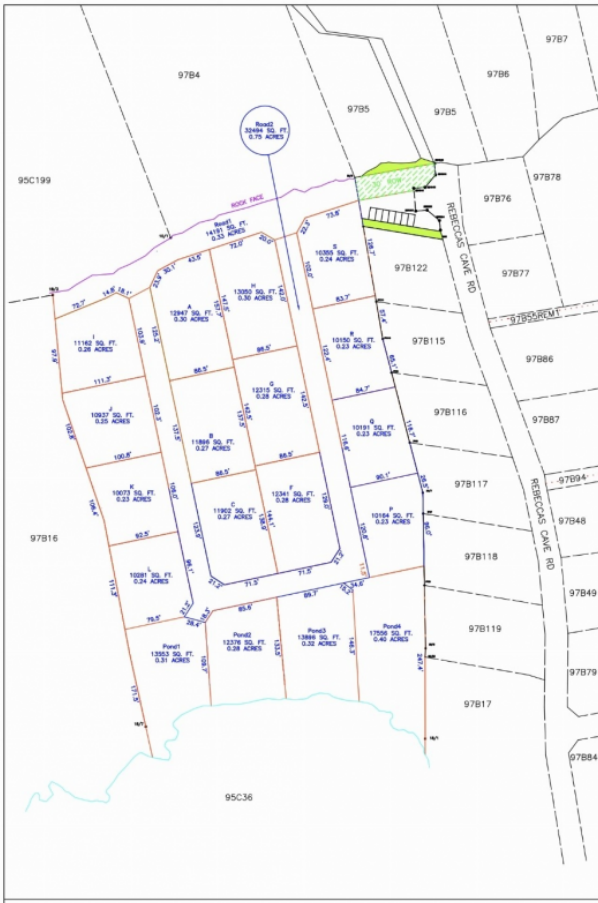
Views	Inland
Block	97B
Parcel	15POND4
Zoning	Low Density residential
Road Frontage	34.6

PRESENTED BY

Sophie Miles
+1-345-926-9926
sophie@milestone.ky

IMAGES





MODIFIED SUBDIVISION DESIGN OF BLOCK 97B, PARCEL 15.

Scale: 1/1250 Date:05.01.2023

All dimensions & areas have been derived from the L&S Dept. Registry Map DXF files, and are subject to final survey.

Notes



CATMAN SURVEY ASSOCIATES LTD.
 UNIT C1, CATMAN BUSINESS PARK
 17, BRIDGE RD
 GEORGE TOWN, GRAND CAYMAN
 P.O. BOX 9128, KY1-1501
 TELEPHONE: (345)944-9122
 EMAIL: info@catmansurvey.ky